

The Gear.sg App [Graphic motif cards]

You can make 5 double sided cards by printing all the pages with paired images and folding them.

When viewed in AR, each side of the card shows the first or sixth floor of the building. The title card adds the roof.

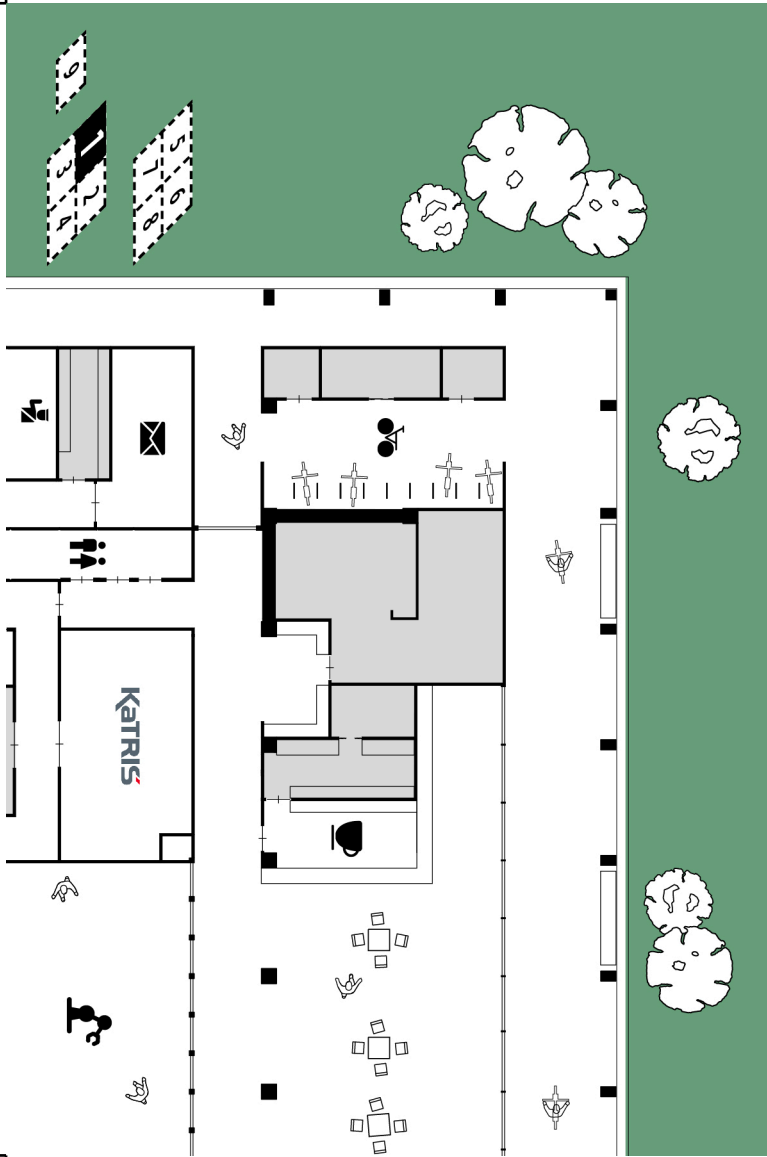
OR

You can instead print the last two pages that combine all four parts of the building together, for the first and sixth floors.

When viewed in AR, hiding a portion of the image by hand will remove the portion of the building, revealing the sections.

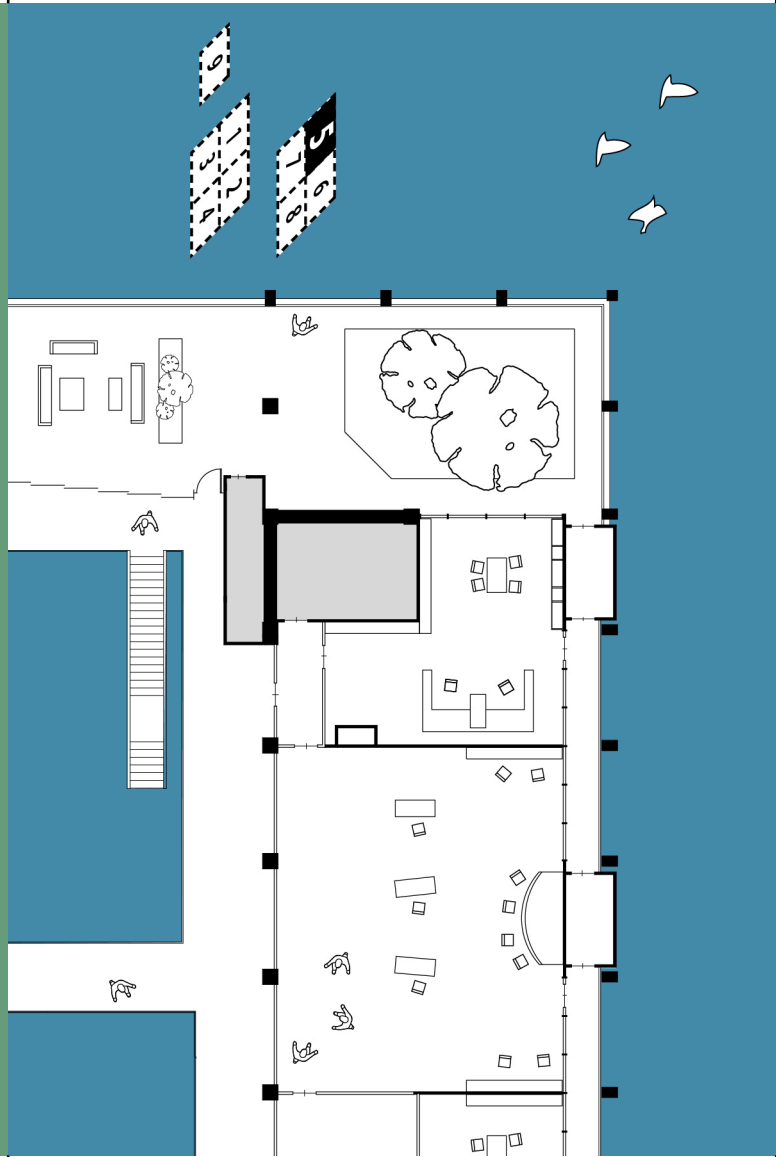
If you do not have access to a printer, you can display the images on a smartphone/computer screen while using another smartphone to view the AR.

front side "1F"

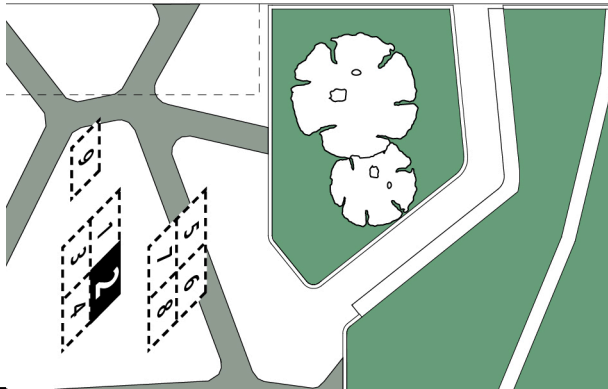
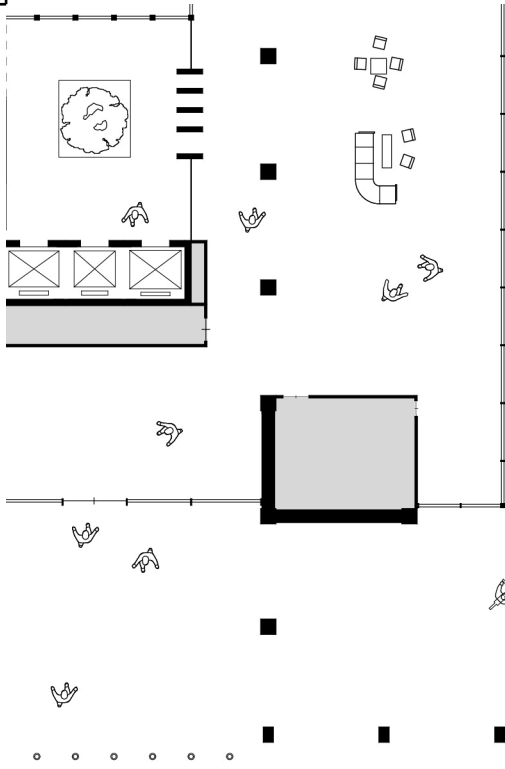


fold

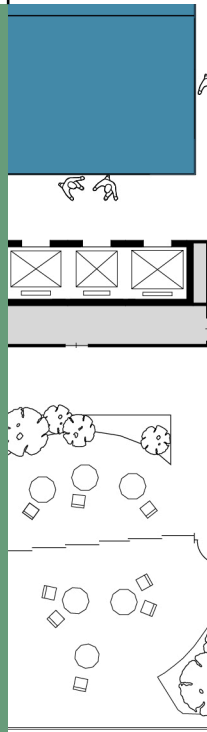
back side "6F"



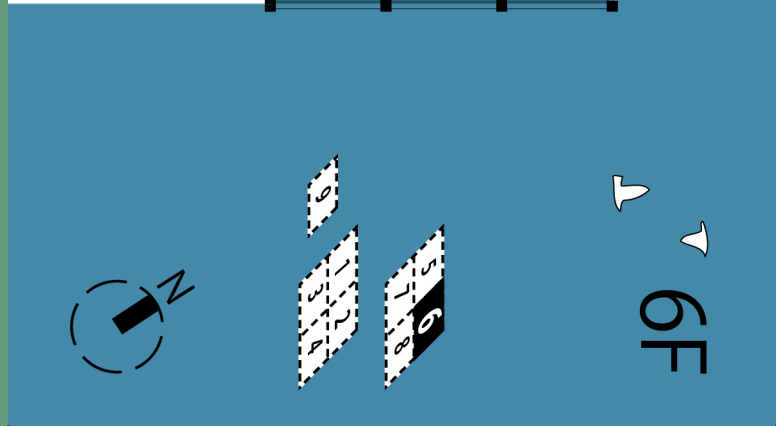
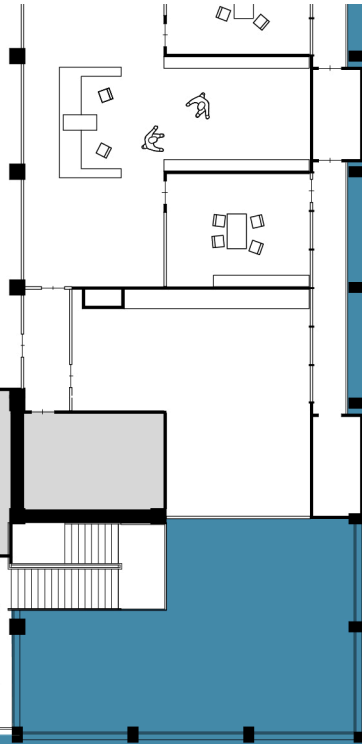
front side "1F"



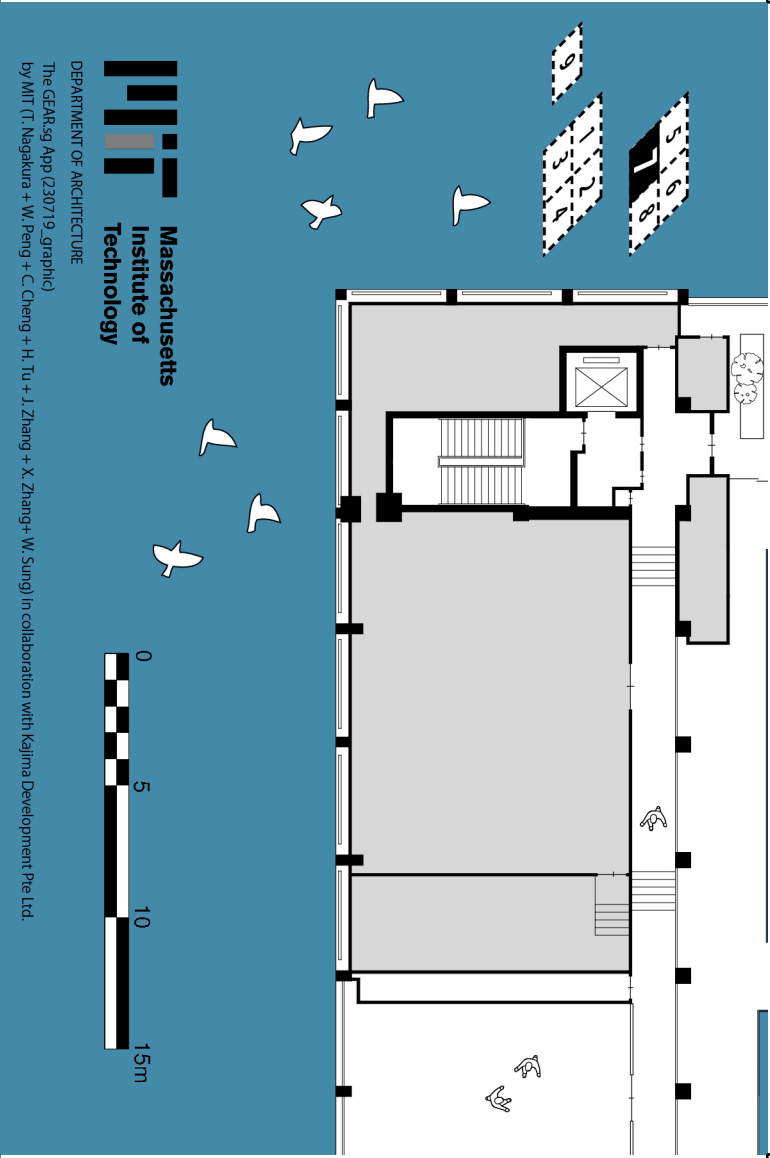
fold



back side "6F"



back side "6F"



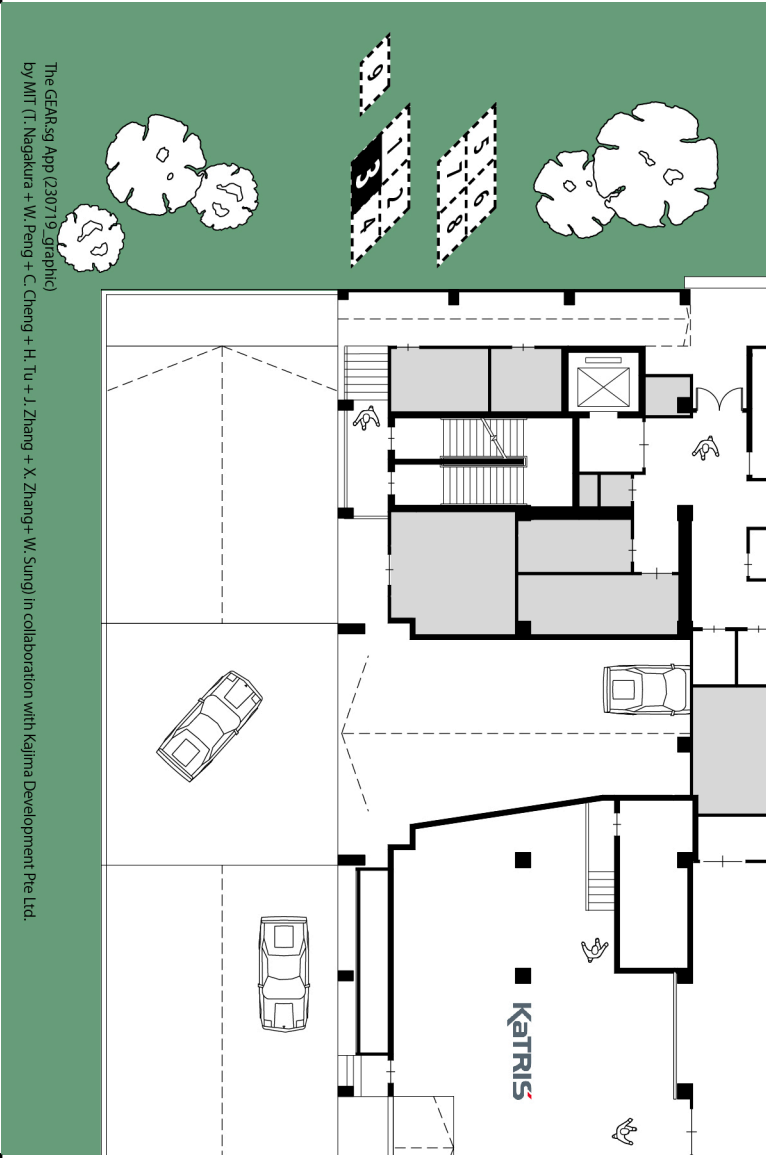
**Massachusetts
Institute of
Technology**

DEPARTMENT OF ARCHITECTURE

The GEAR:sg App (230719)_graphic)

by MIT (T.; Negakura + W. Peng + C. Cheng + H. Tu + J. Zhang + X. Zhang+ W. Sung) in collaboration with Kajima Development Pre Ltd.

front side "1F"



KATRIS

The GEAR:sg App (230719)_graphic)
by MIT (T.; Negakura + W. Peng + C. Cheng + H. Tu + J. Zhang + X. Zhang+ W. Sung) in collaboration with Kajima Development Pre Ltd.

back side "6F"

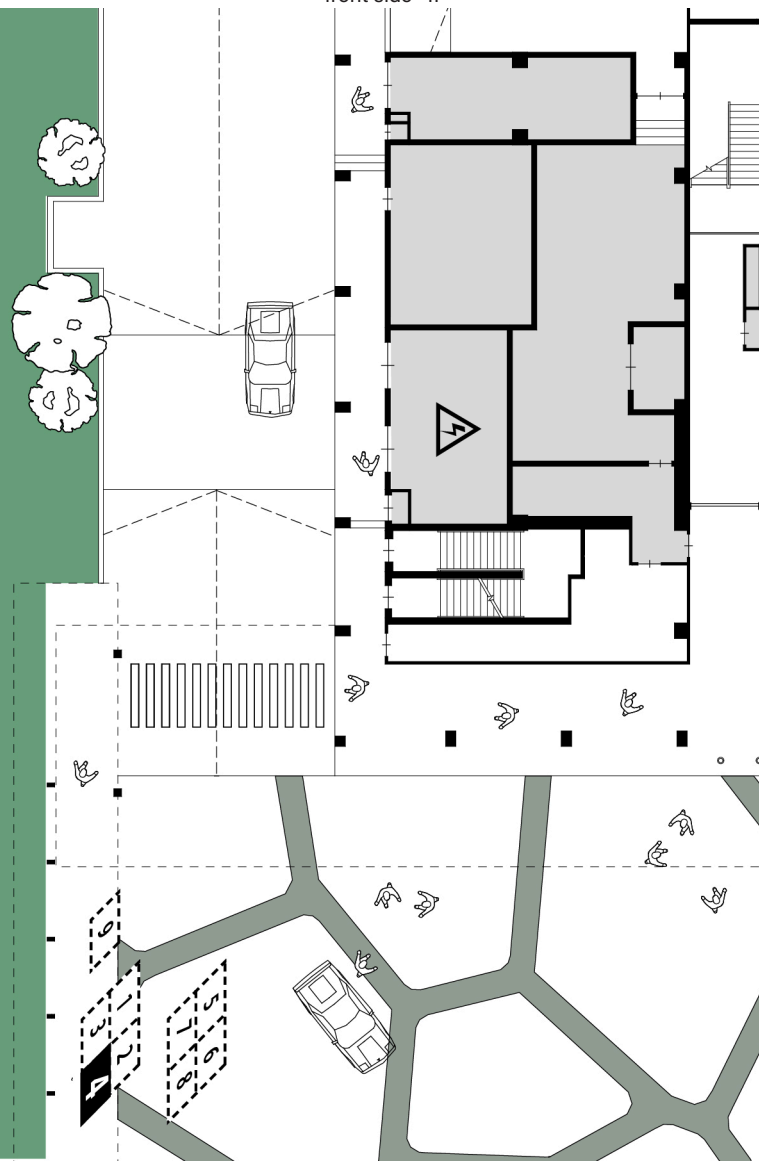
ADDRESS: 19 CHANGI BUSINESS PARK CRESCENT
SINGAPORE 489690
FLOOR AREA: 13061.17 SQM
6 FLOORS & 1 BASEMENT
SITE AREA: 5234.9 SQM
STRUCTURE: REINFORCED CONCRETE

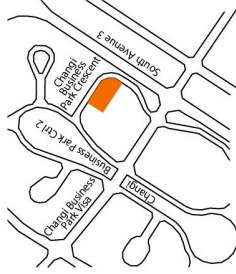


THE
GEAR

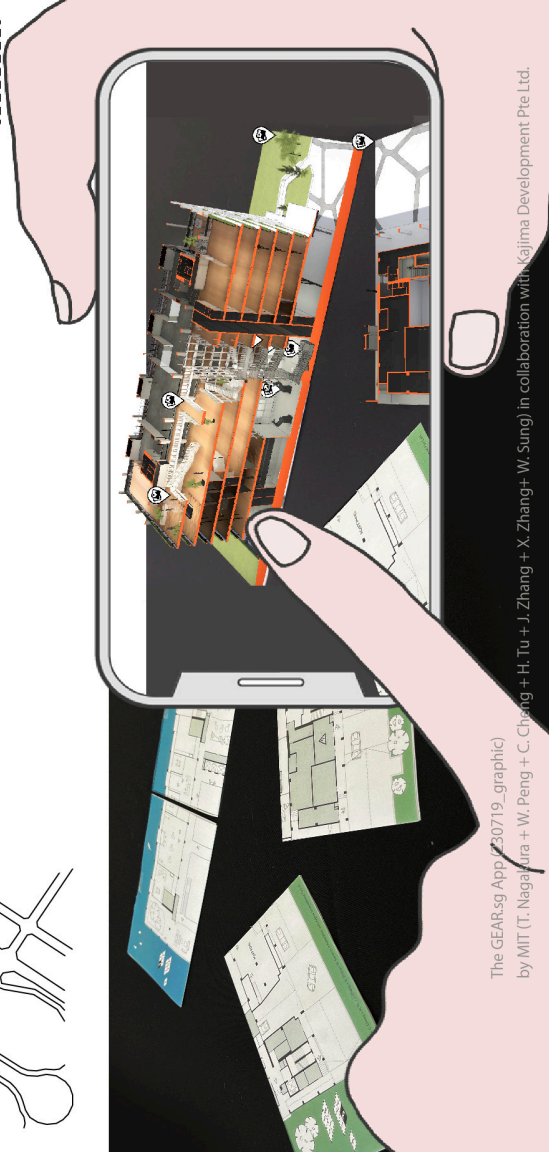
KAJIMA LAB FOR GLOBAL ENGINEERING,
ARCHITECTURE & REAL ESTATE

front side "1F"





The GEAR.sg App



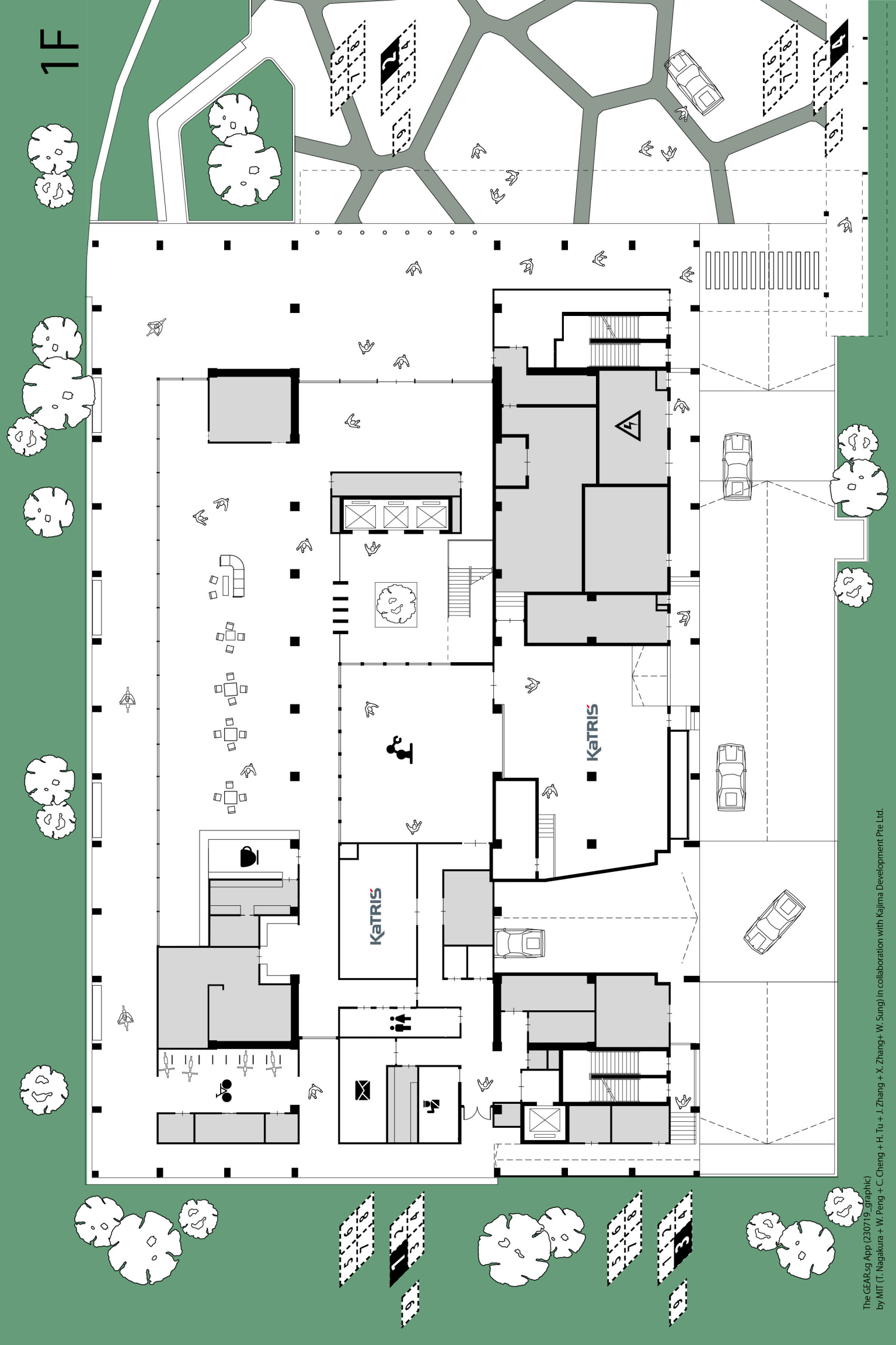
The GEAR.sg App (Z30719_graphic)
by MIT (T. Nagakura + W. Peng + C. Cheng + H. Tu + J. Zhang + X. Zhang + W. Sung) in collaboration with Kajima Development Pte Ltd.

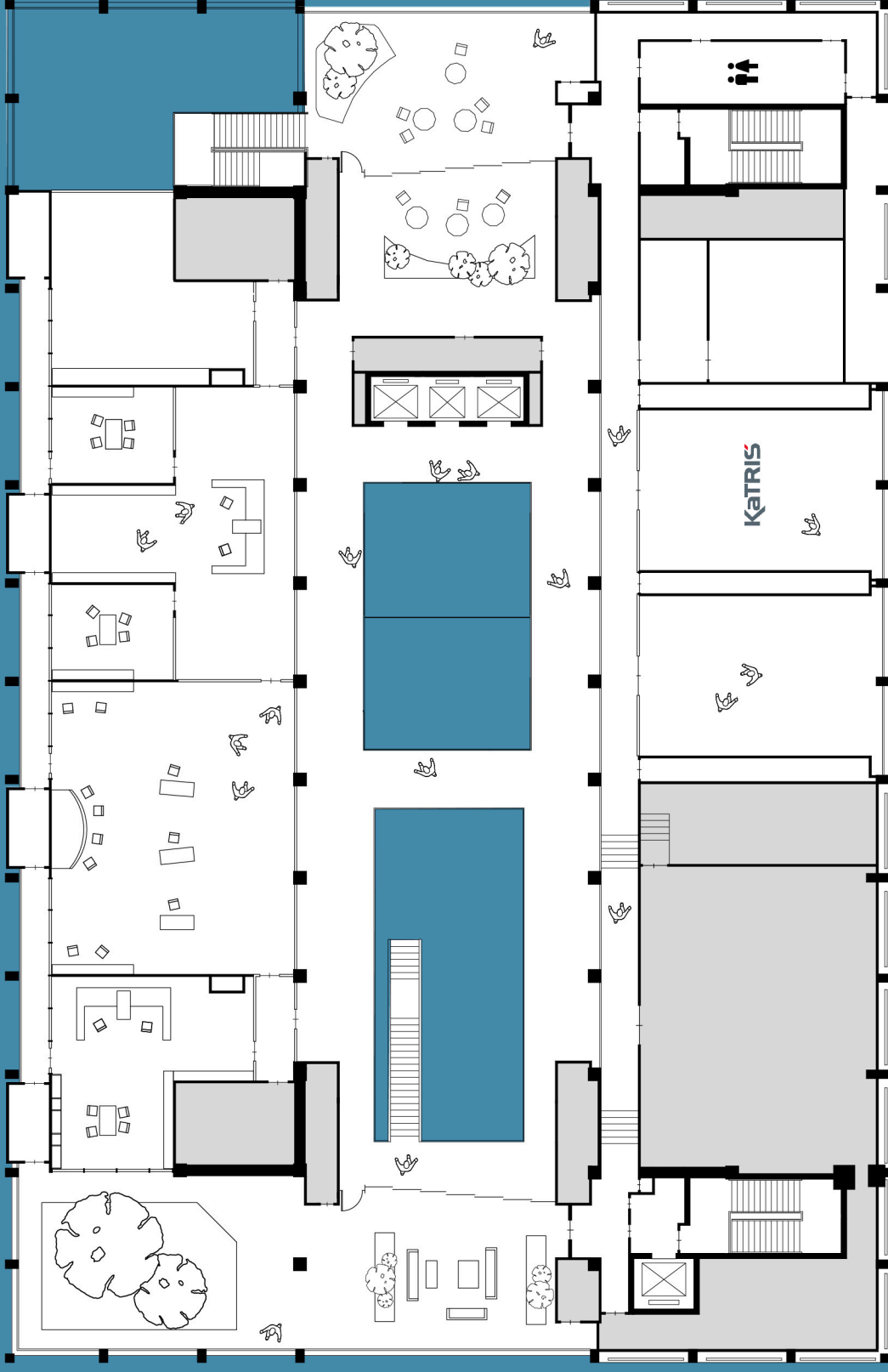
fold



The GEAR.sg App

1. Scan the QR code and install the app. The GEAR.sg App.
2. Launch the app and view the picture cards through the smartphone camera.
3. You will see the 3D models on the cards.





ADDRESS: 19 CHANGI BUSINESS PARK CRESCENT
SINGAPORE 489690
FLOOR AREA: 13061.17 SQM
6 FLOORS & 1 BASEMENT
SITE AREA: 5234.9 SQM
STRUCTURE: REINFORCED CONCRETE



Massachusetts
Institute of
Technology

DEPARTMENT OF ARCHITECTURE
The GEAR.sg App (230719_graphic)
by MIT (T. Nagakura + W. Peng + C. Cheng + H. Tu + J. Zhang + X. Zhang + W. Sung) in collaboration with Kajima Development Pte Ltd.



THE GEAR
KAJIMA LAB FOR GLOBAL ENGINEERING,
ARCHITECTURE & REAL ESTATE